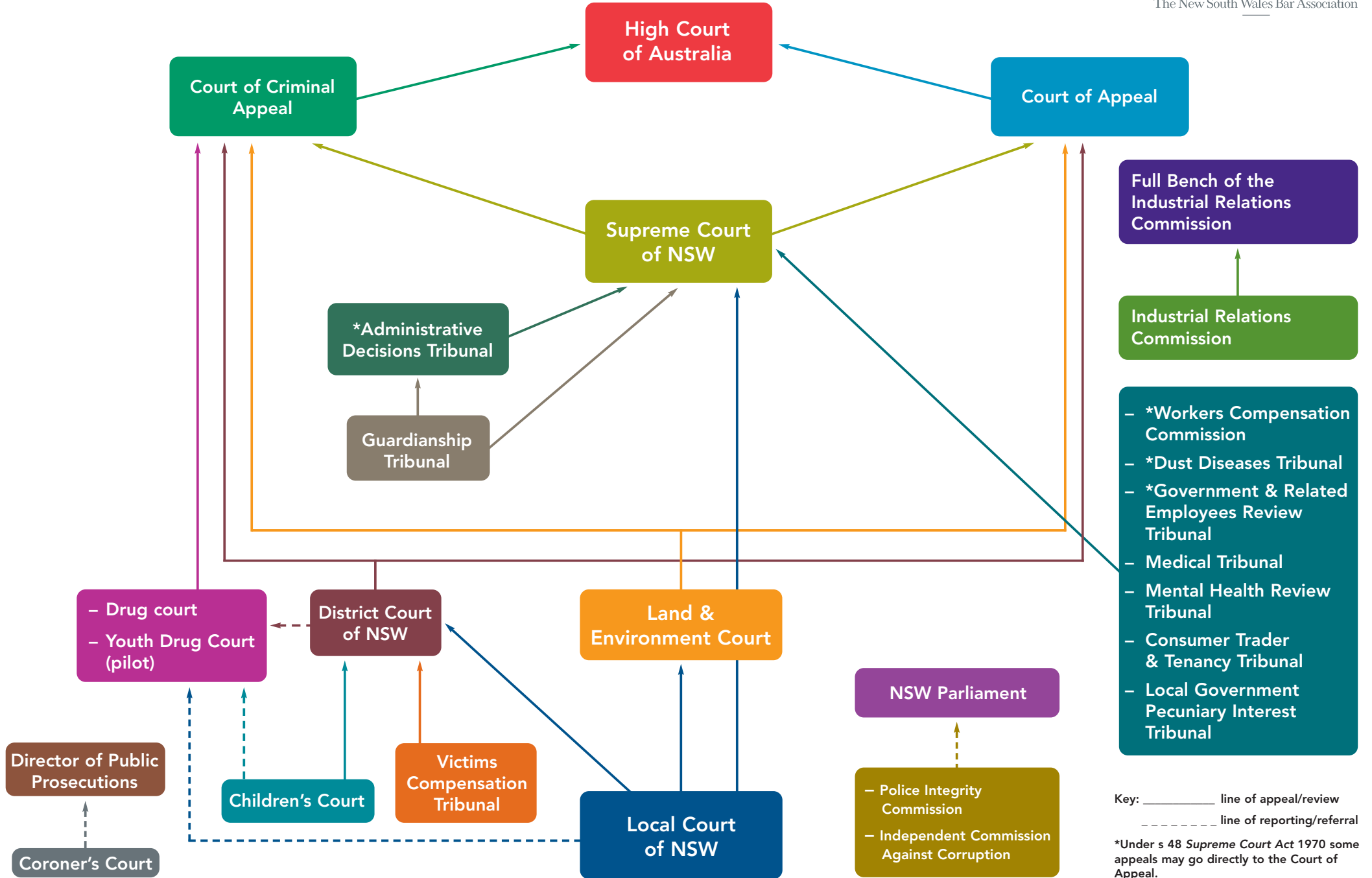


STATE COURTS/TRIBUNALS/COMMISSIONS

As at 1 December 2005



The New South Wales Bar Association



Key: _____ line of appeal/review
 - - - - - line of reporting/referral

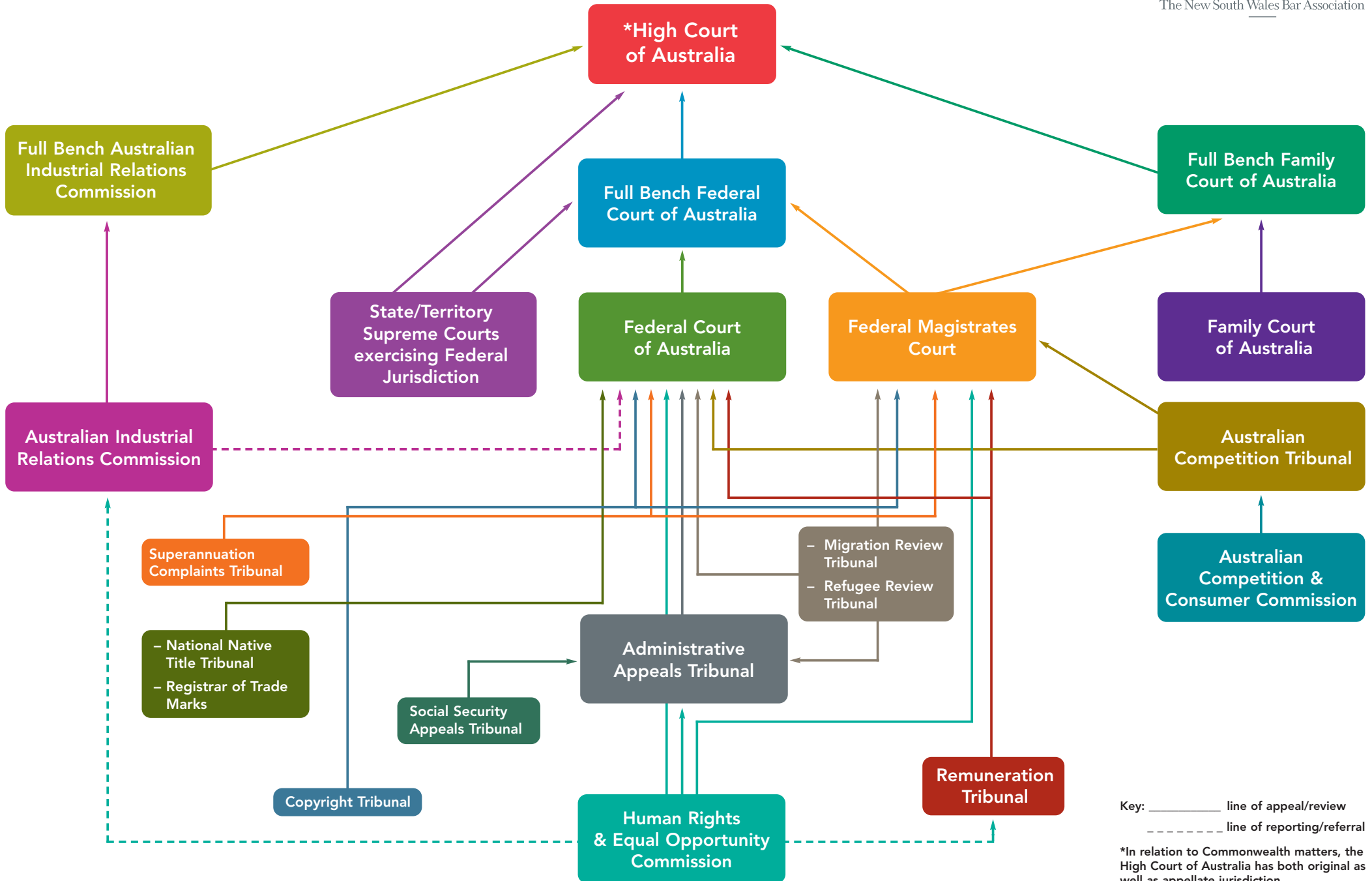
*Under s 48 Supreme Court Act 1970 some appeals may go directly to the Court of Appeal.

FEDERAL COURTS/TRIBUNALS/COMMISSIONS

As at 1 December 2005



The New South Wales Bar Association



Key: _____ line of appeal/review
 - - - - - line of reporting/referral

*In relation to Commonwealth matters, the High Court of Australia has both original as well as appellate jurisdiction.